

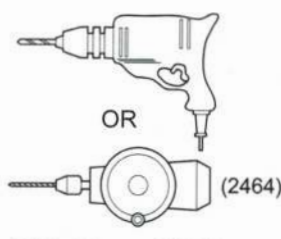
## SpringWood Cottage QuickStyle (1250i)



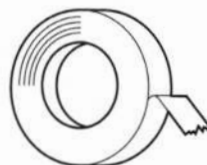
Supplied  
(7014)



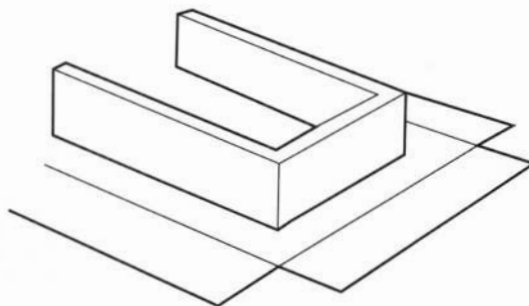
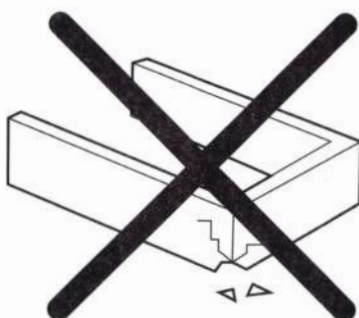
Supplied  
(9216)



With 1.5mm drill bit  
(5684)



To prevent damage and breakage use the box supplied to protect your work surface. Simply open out the box and lay it on the desired surface to protect both the surface and the parts during construction.



We advise that you first check all parts are present before continuing onto the building stage. If any parts are missing please contact us and we will be happy to assist you.

Dry build your kit first using masking tape to become fully accustomed with the kit. Lightly mark each part with a pencil so that you can identify each part easily when building. You may also like to mark which surfaces will require decoration before full construction; ceiling, scotia strips, porticos, windows and doors for example.

When working through the instruction you should determine the best time to decorate the various parts of the kit. This will allow you to decorate at the best time during full construction. This is why a dry build is advised first. Try making a note on the instructions when painting or wall papering is required and this will help you to remember when you come back to that step.

It is not recommended to keep your dolls' house in a conservatory due to the extremes of temperature.

If you require any assistance or have any queries, feel free to contact us on the below details:

### The Dolls House Emporium

High Holborn Road, Ripley, Derbyshire DE5 3YD

TEL (UK): 0845 434 9202

TEL (International): +44 1332 912 989

FAX: 01 773 513 772

website: [www.dollshouse.com](http://www.dollshouse.com)

email: [products@dollshouse.com](mailto:products@dollshouse.com)



5 035189 225994

# PARTS LIST

When requesting missing or damaged parts please prefix with 1250

A8

A2

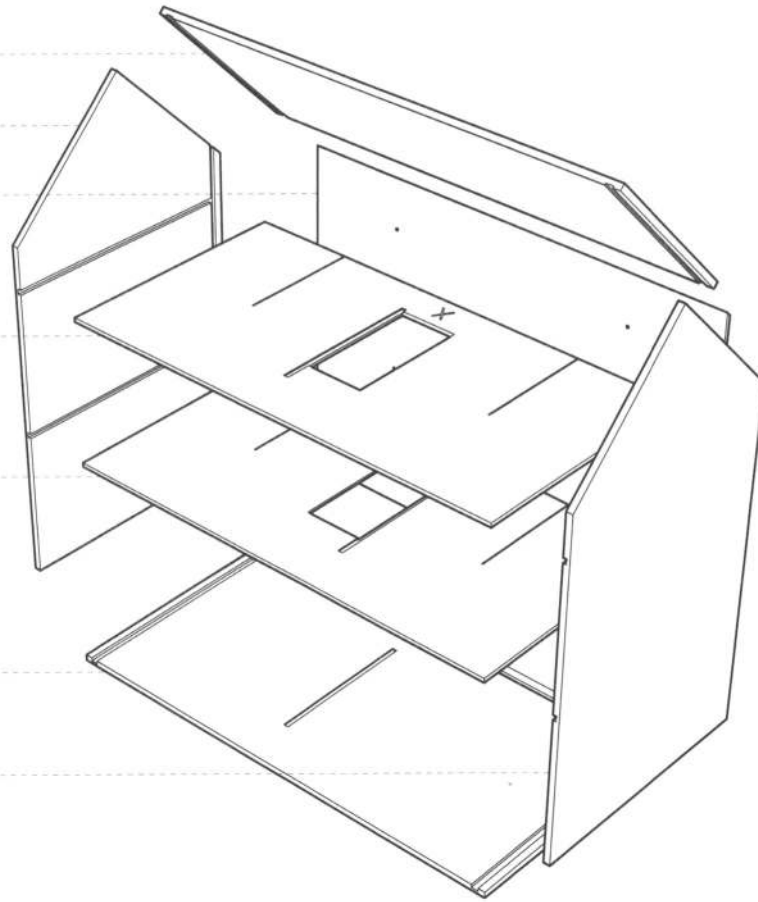
A3

A5B

A5A

A1

A4



C18

C16B

C16A

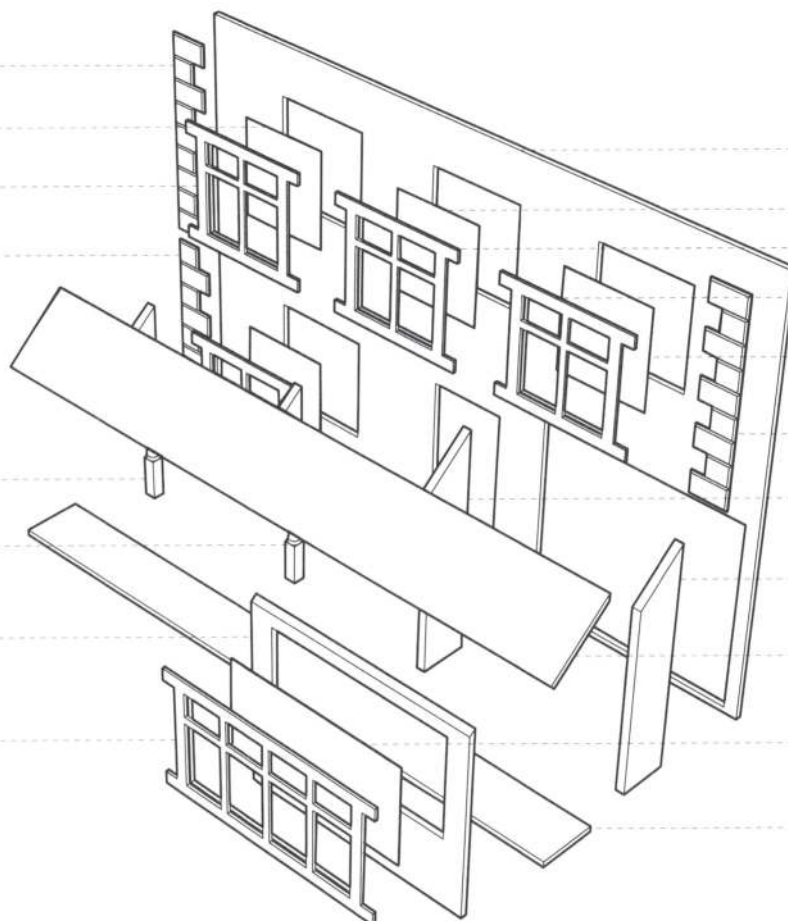
C17

C13

C13

C10

C15A



C7

C16B

C16A

C16A

C16B

C19

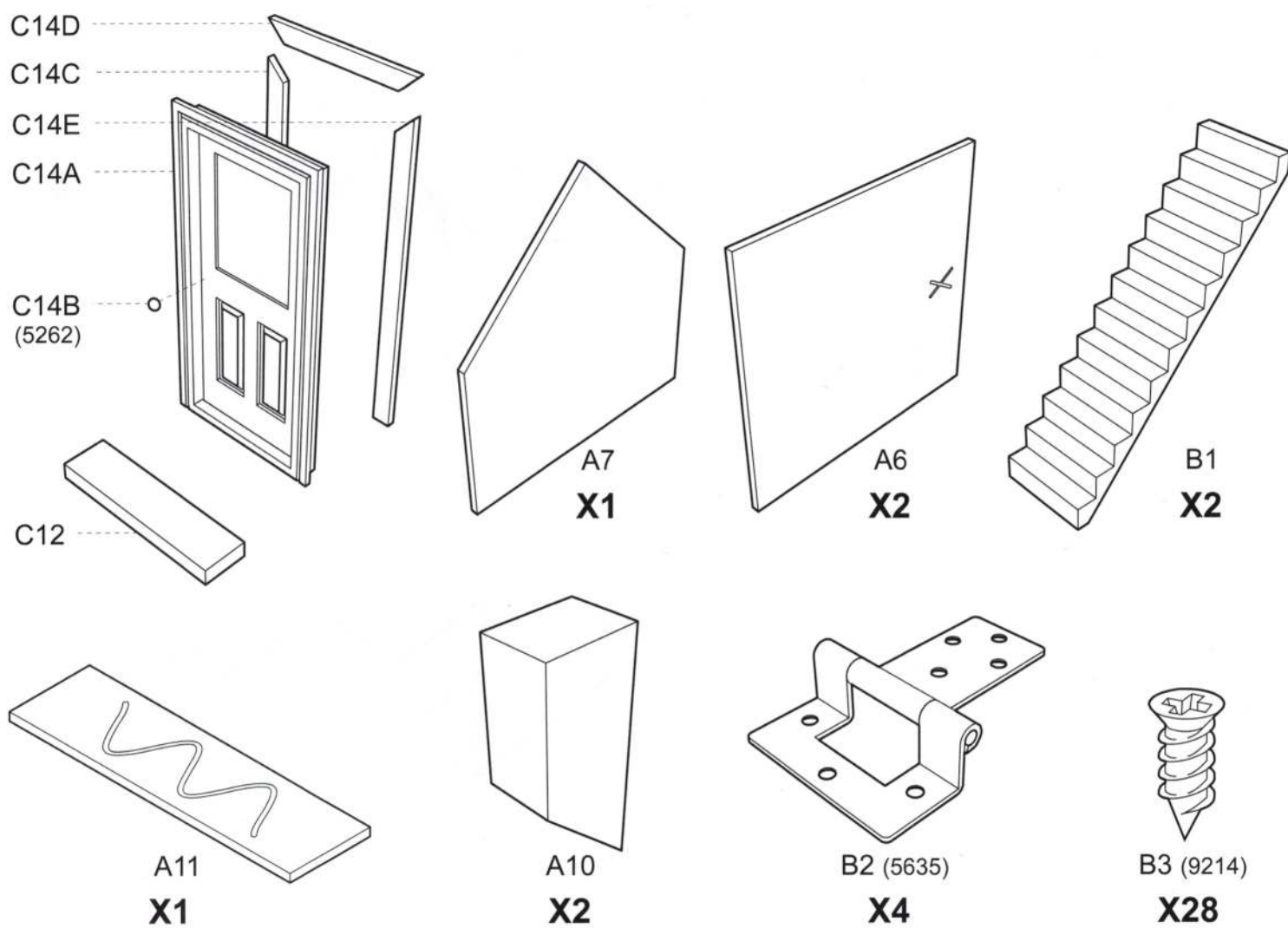
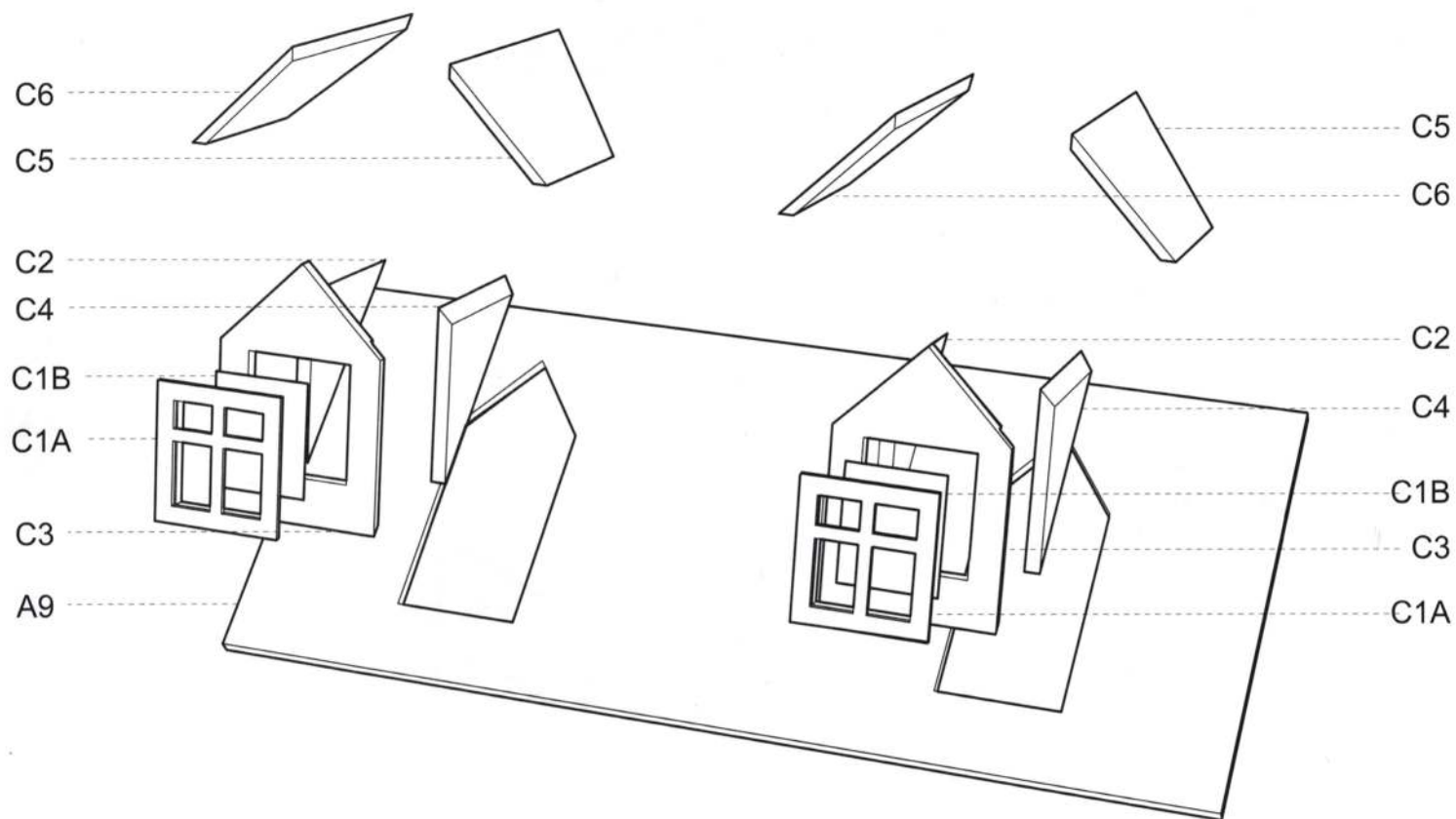
C9

C9

C11

C15B

C8

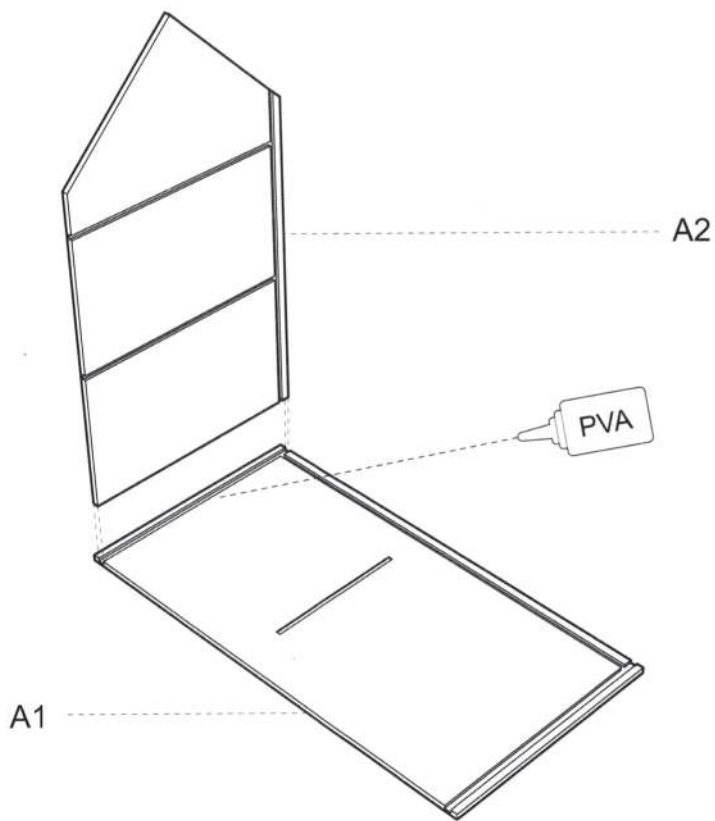




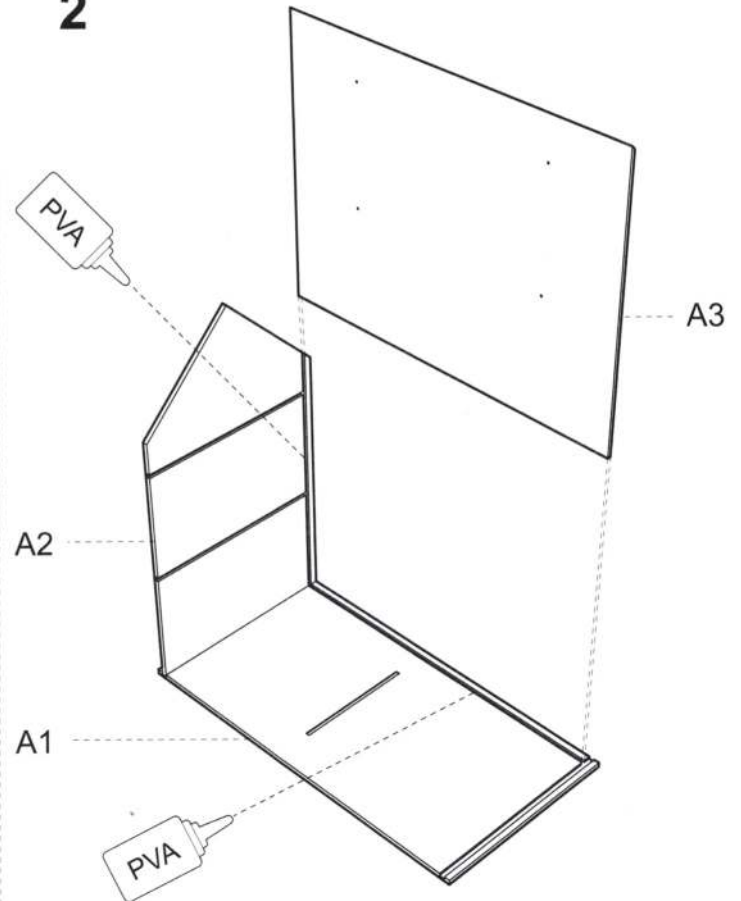
# BUILD INSTRUCTIONS

When requesting missing or damaged parts please prefix with 1250

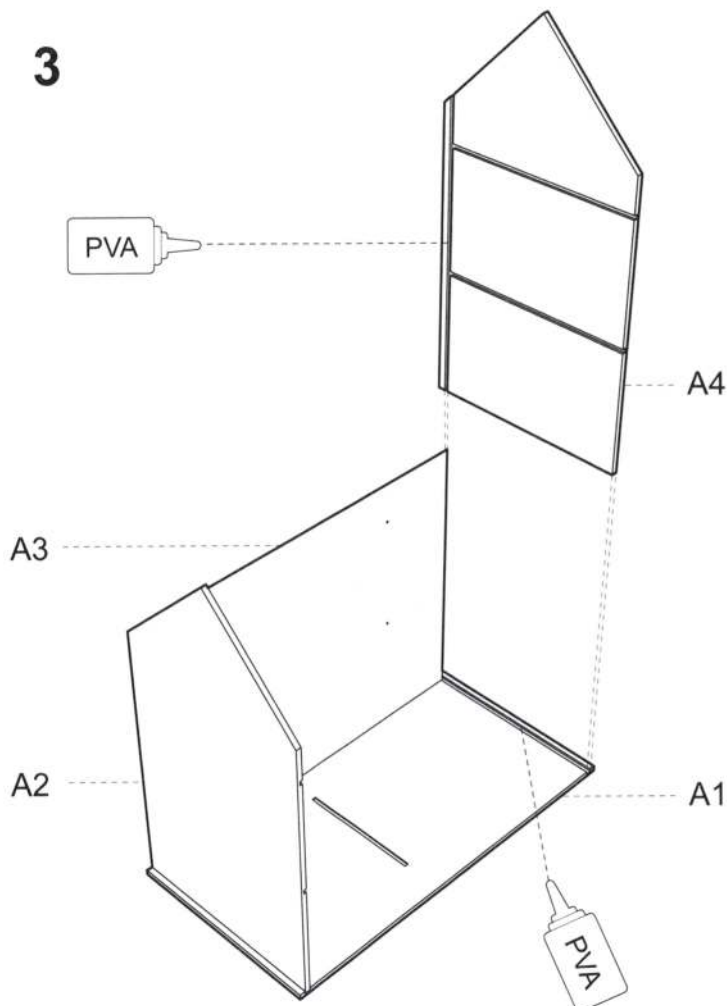
1



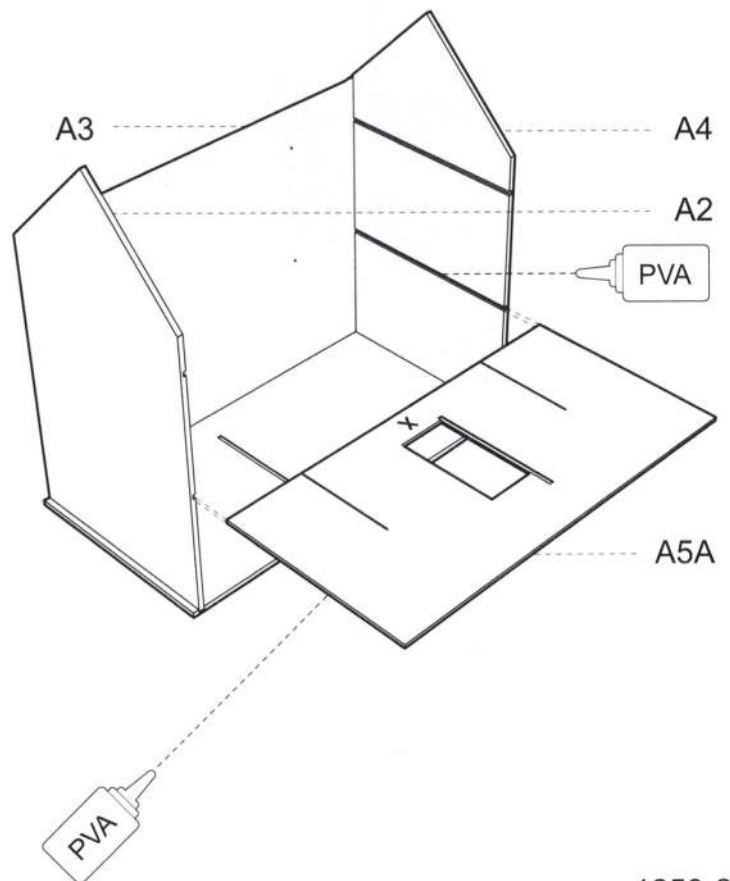
2



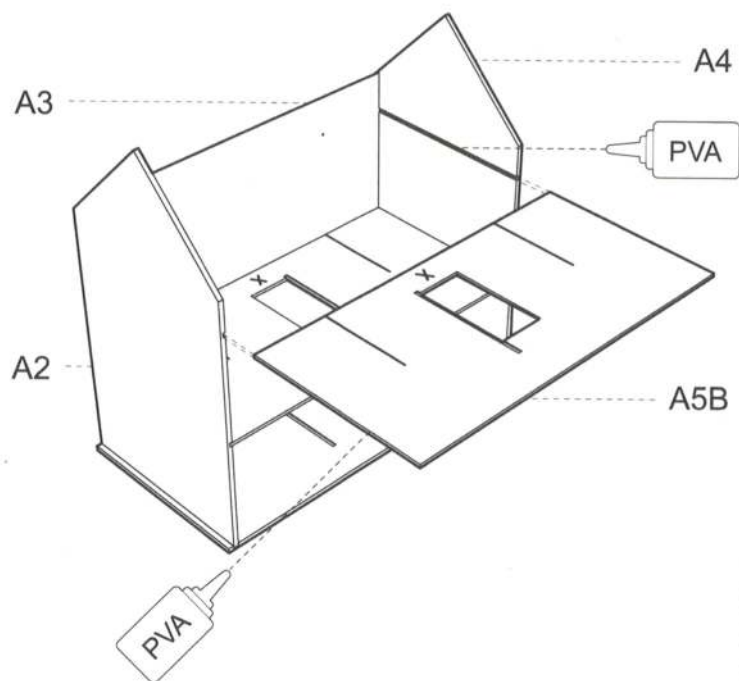
3



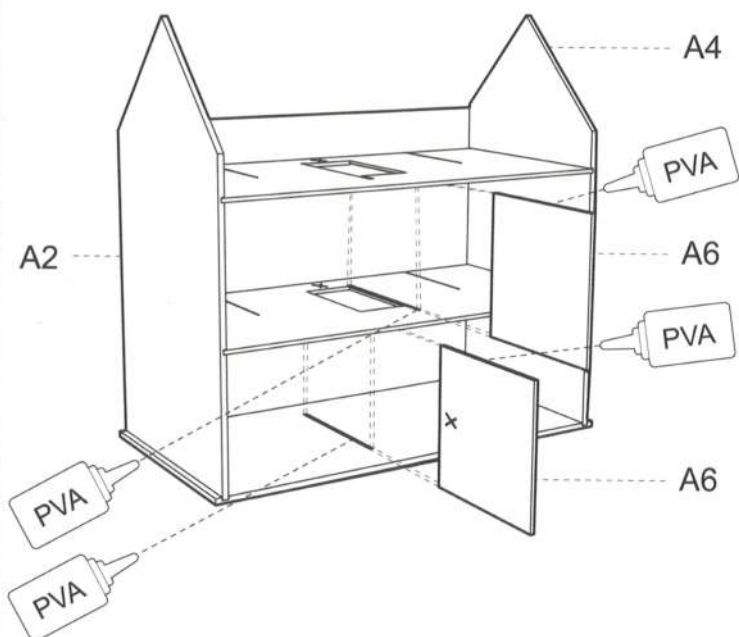
4



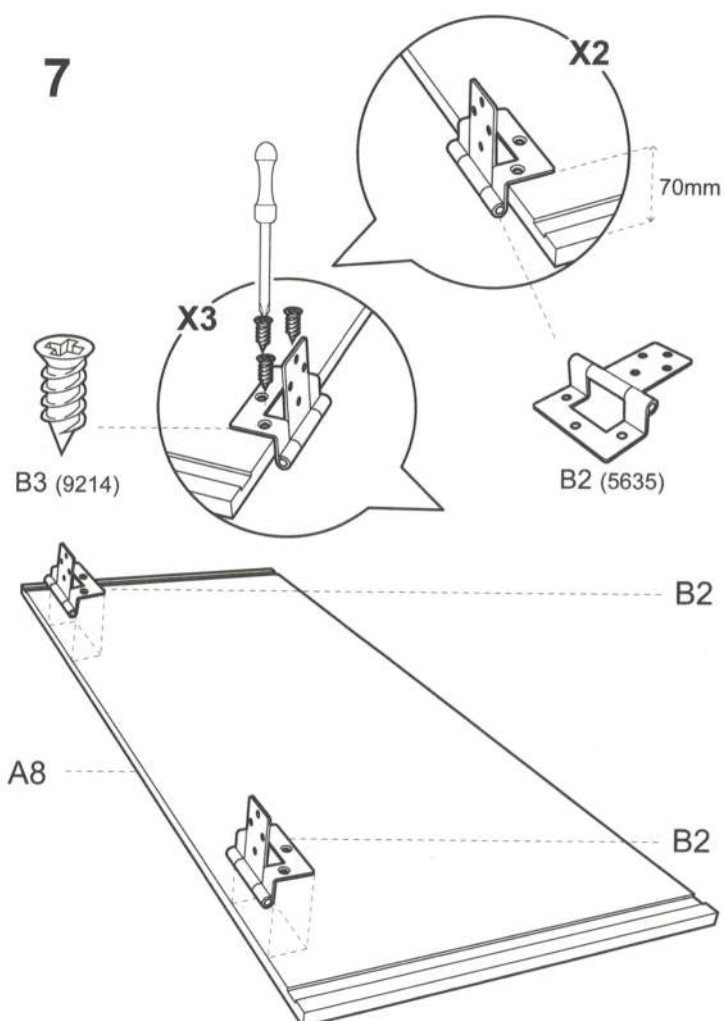
5



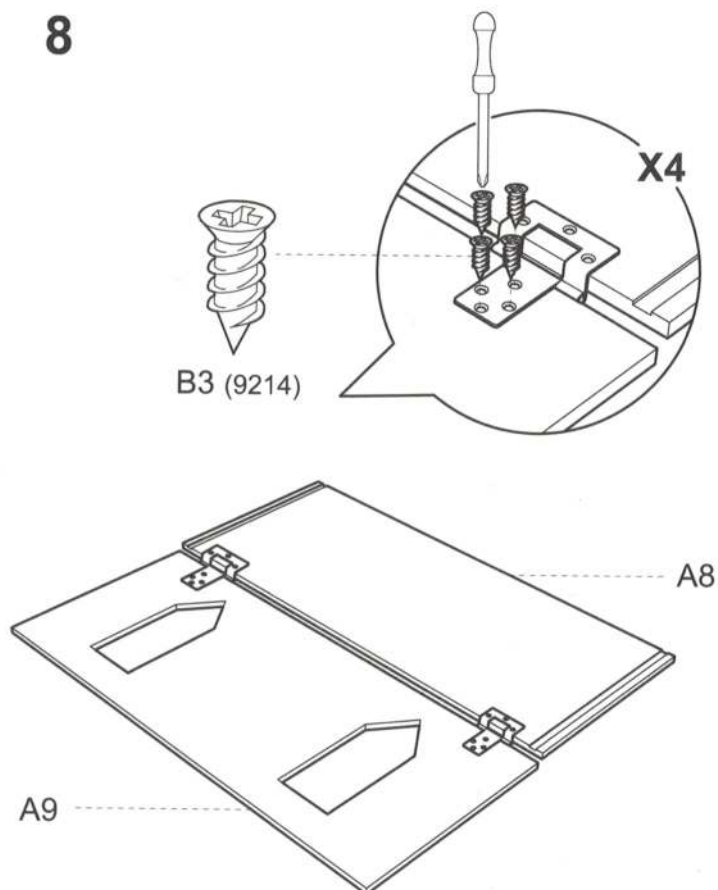
6



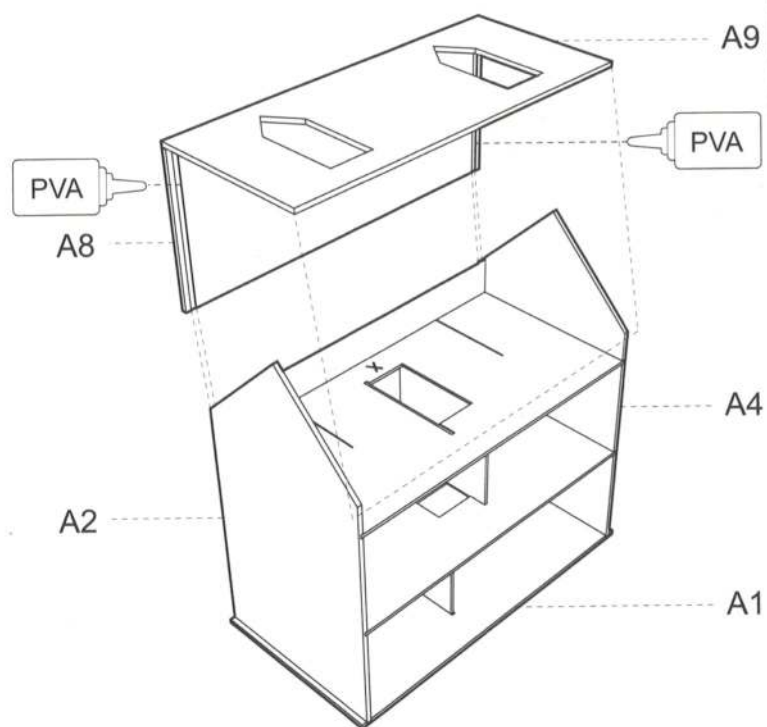
7



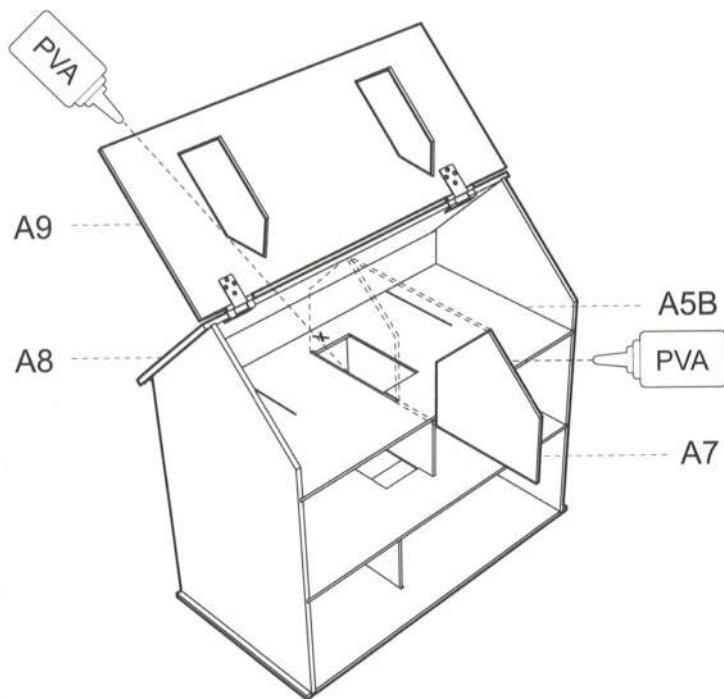
8



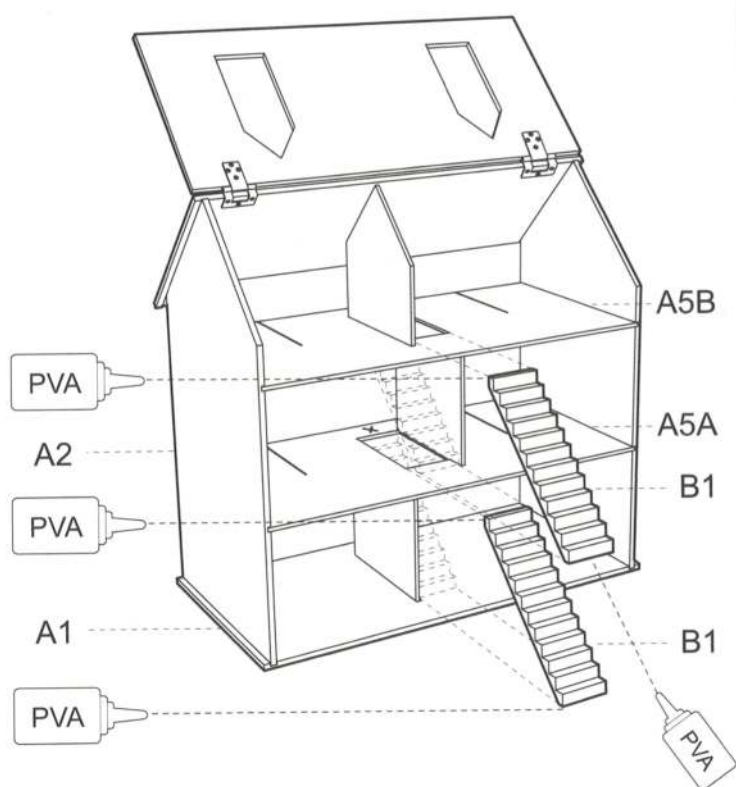
9



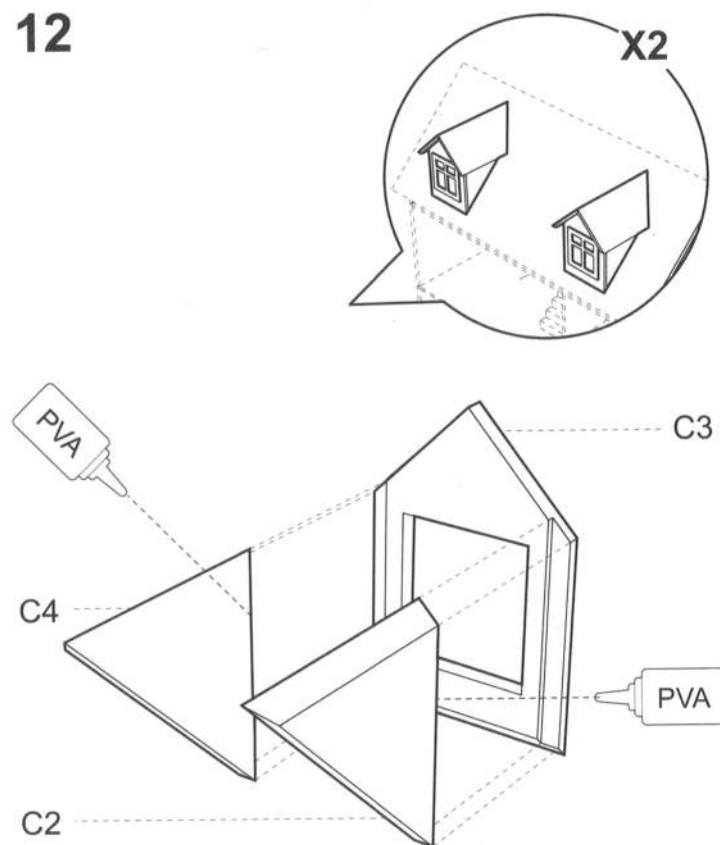
10



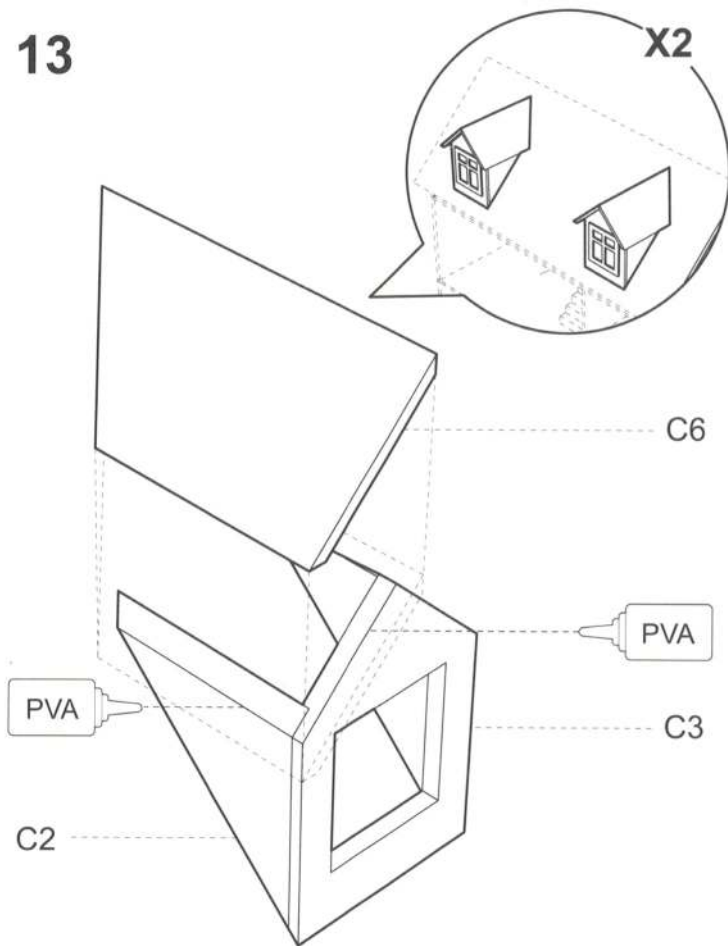
11



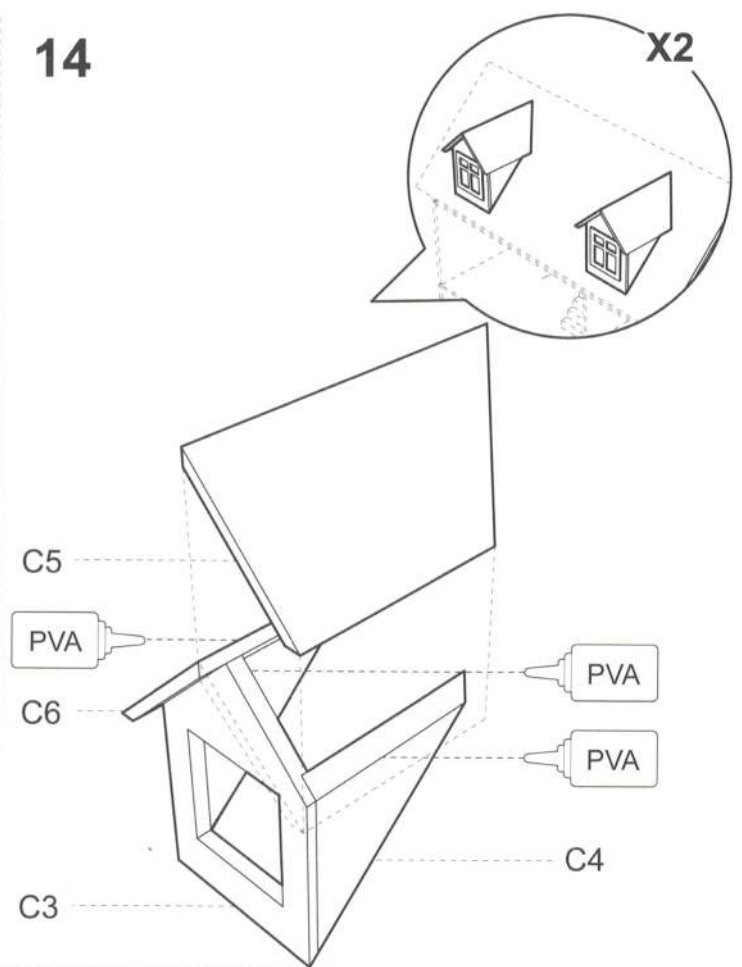
12



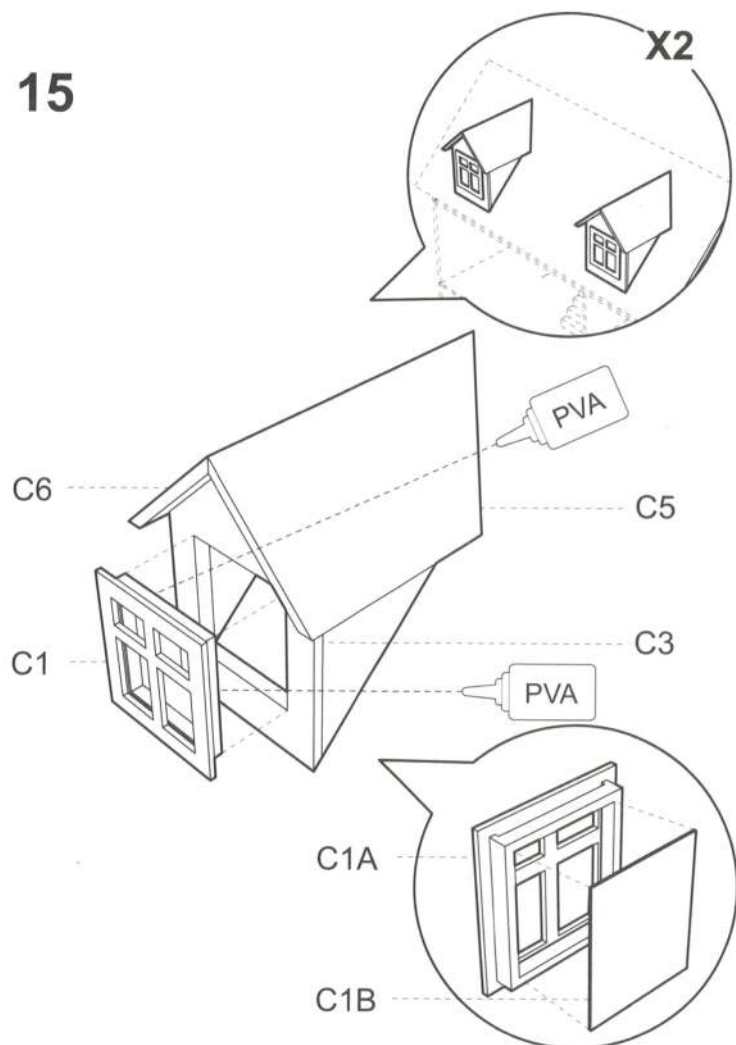
13



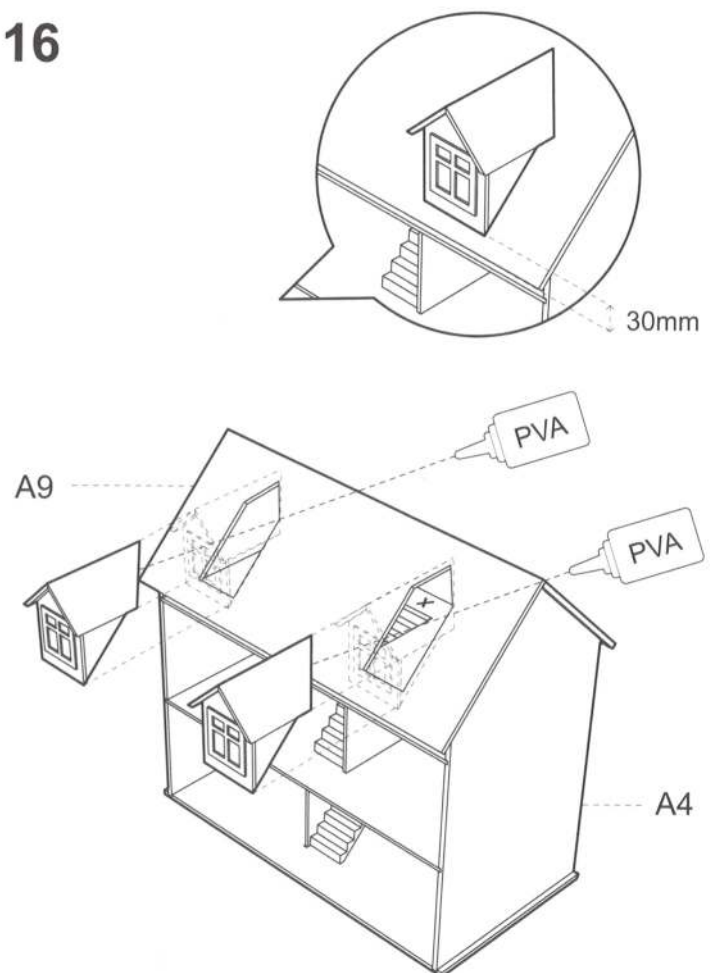
14



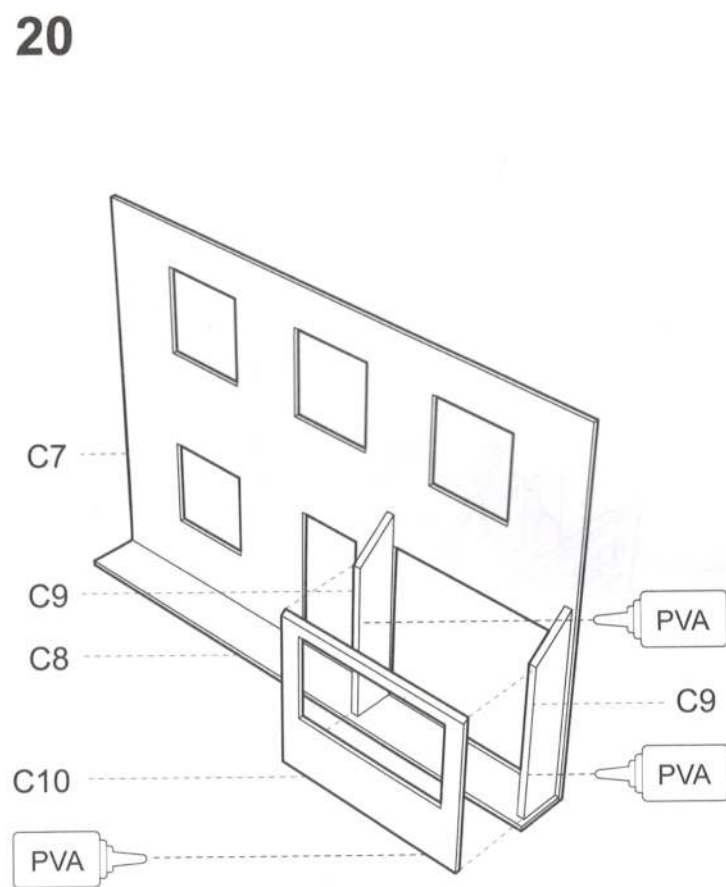
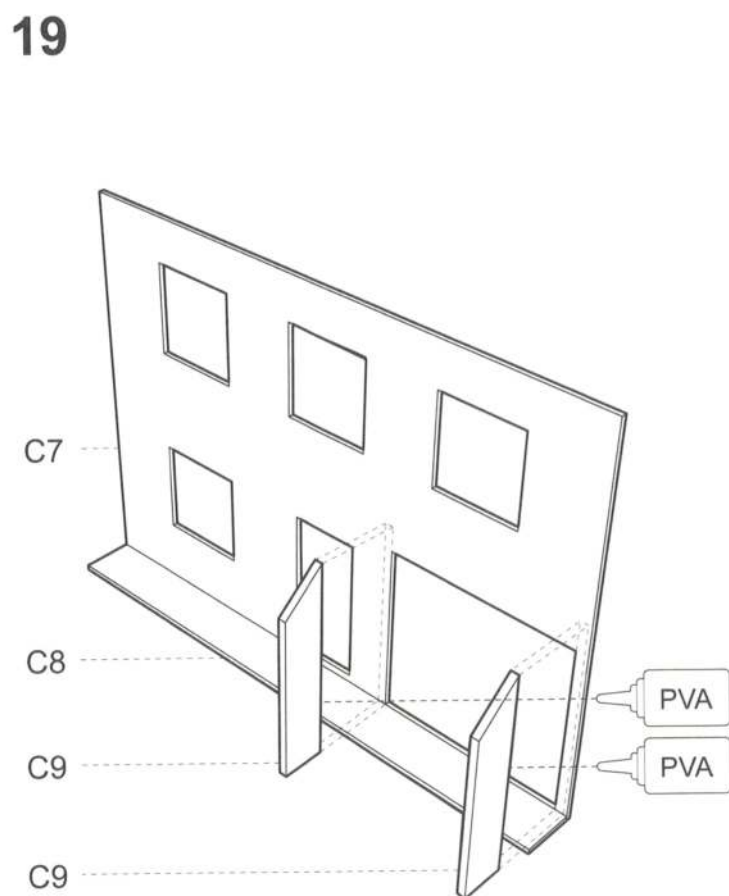
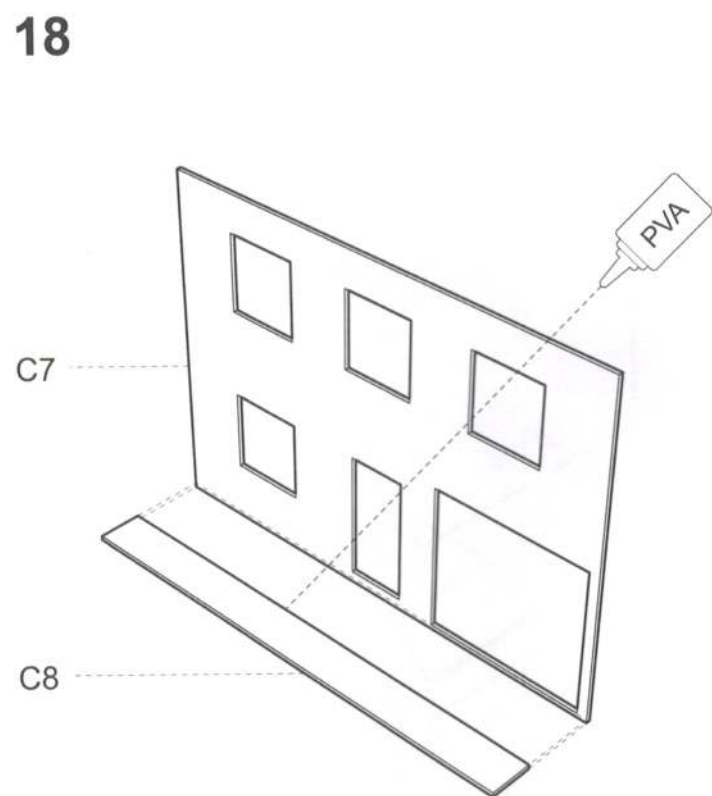
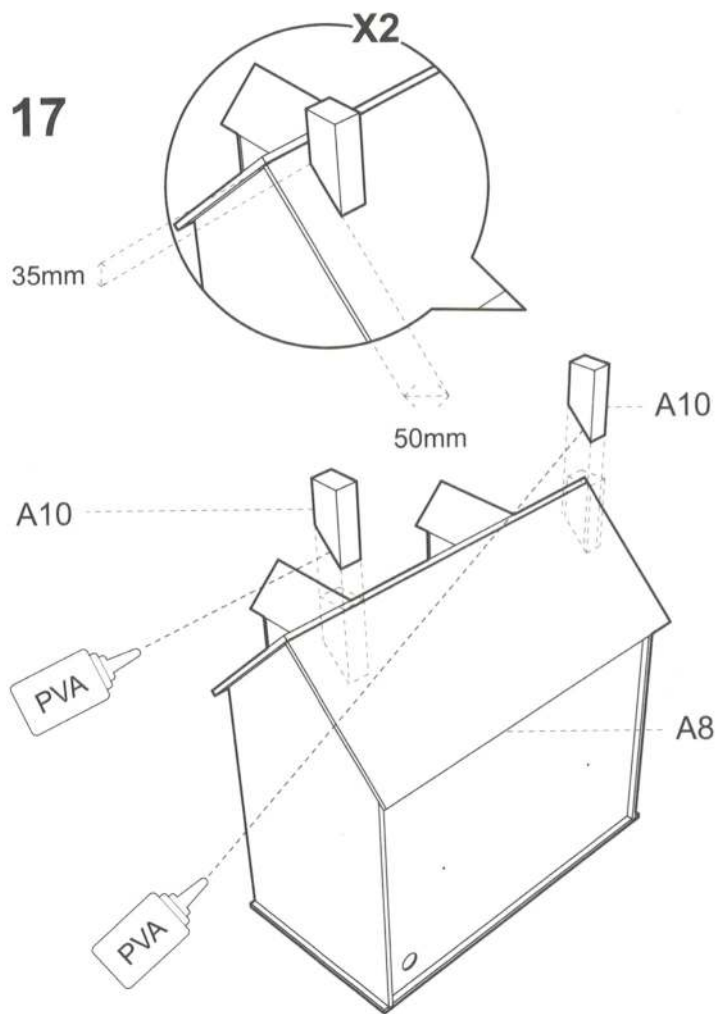
15



16

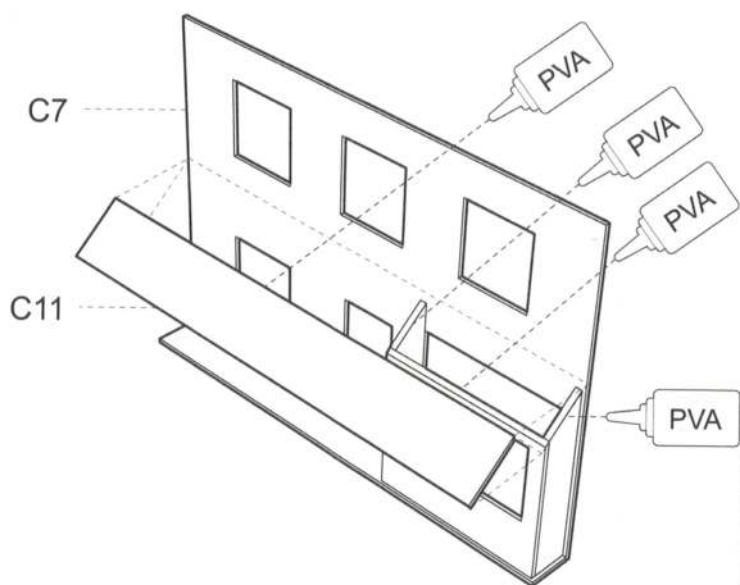




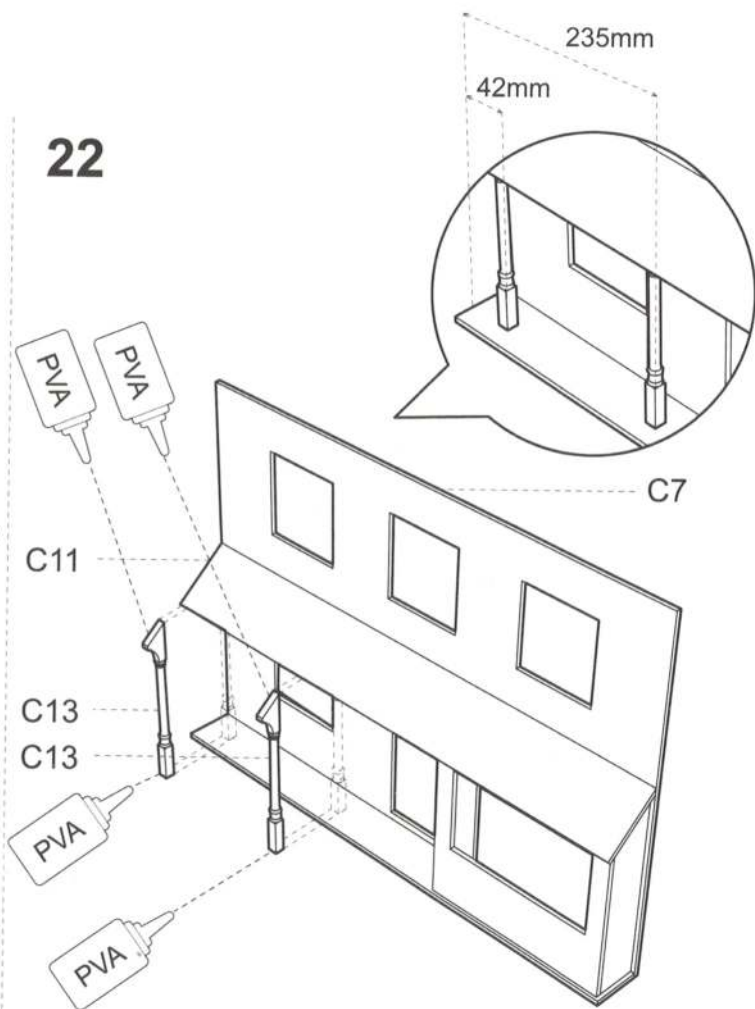




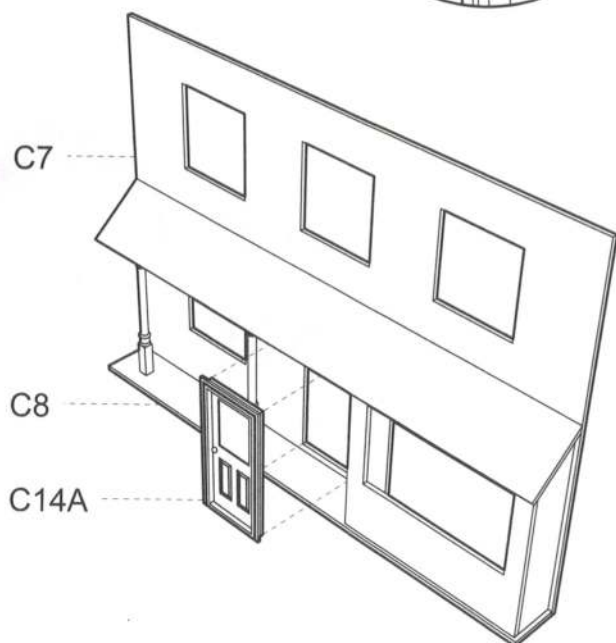
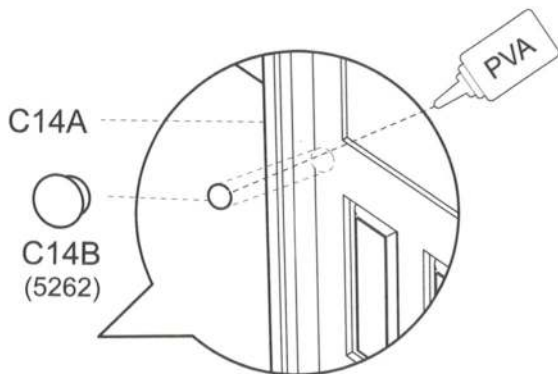
21



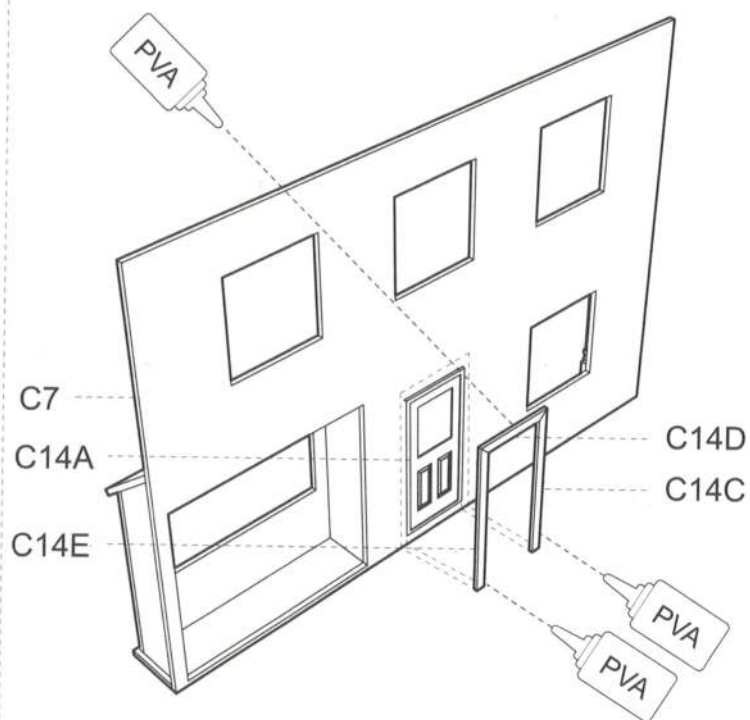
22



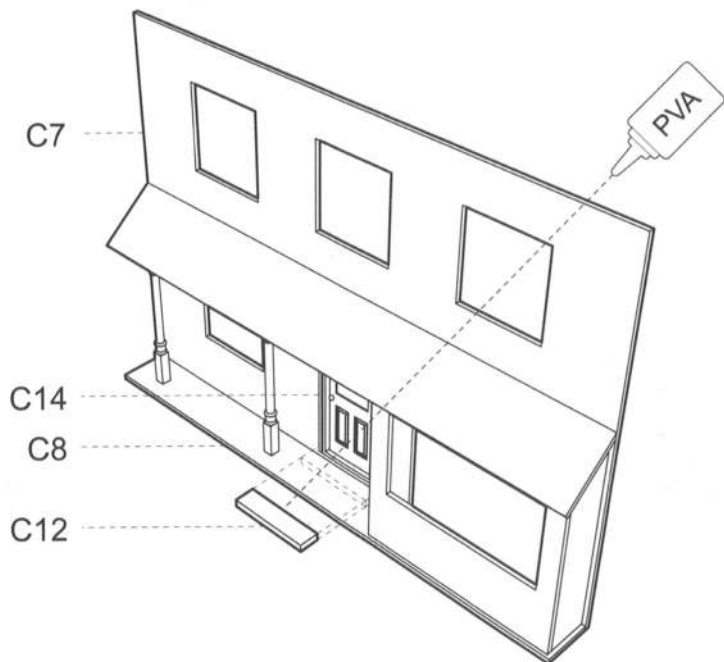
23



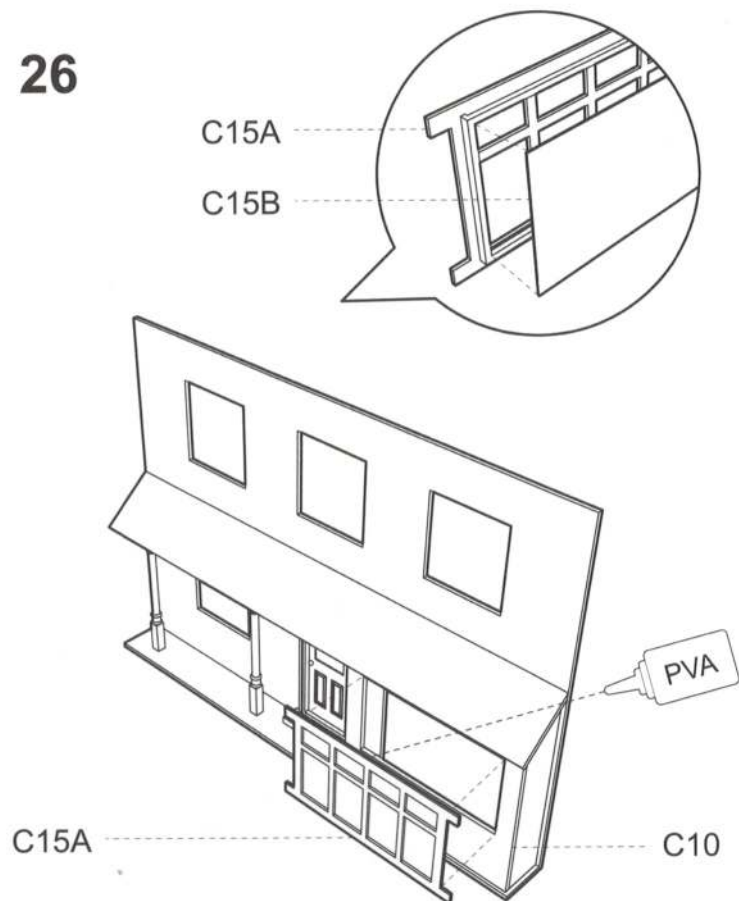
24



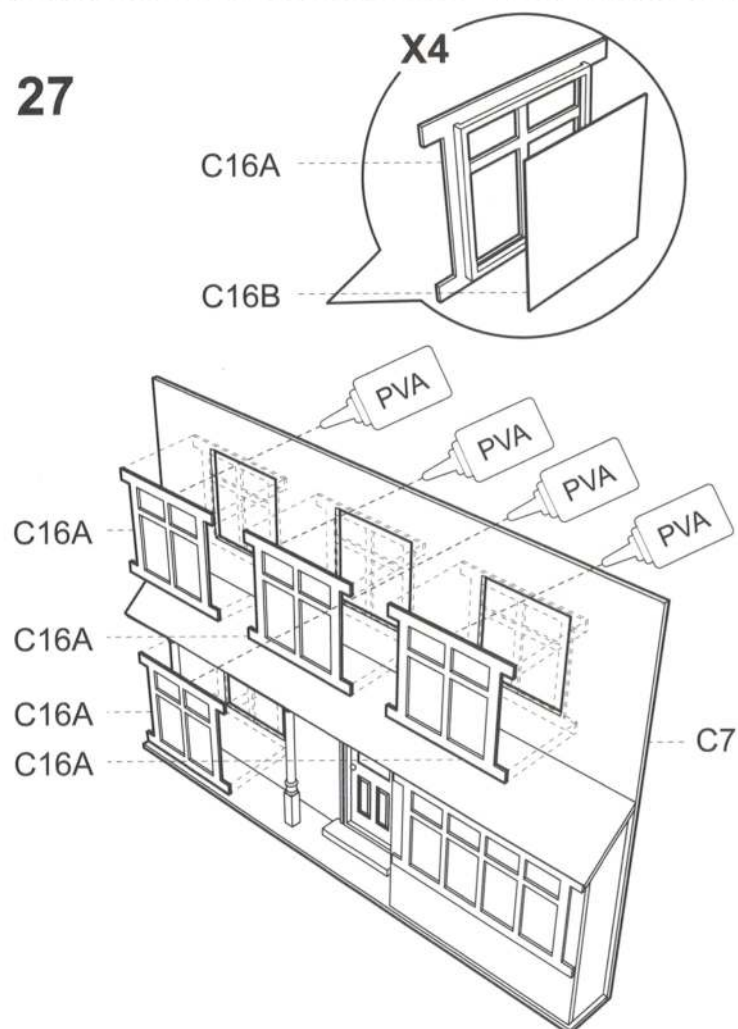
25



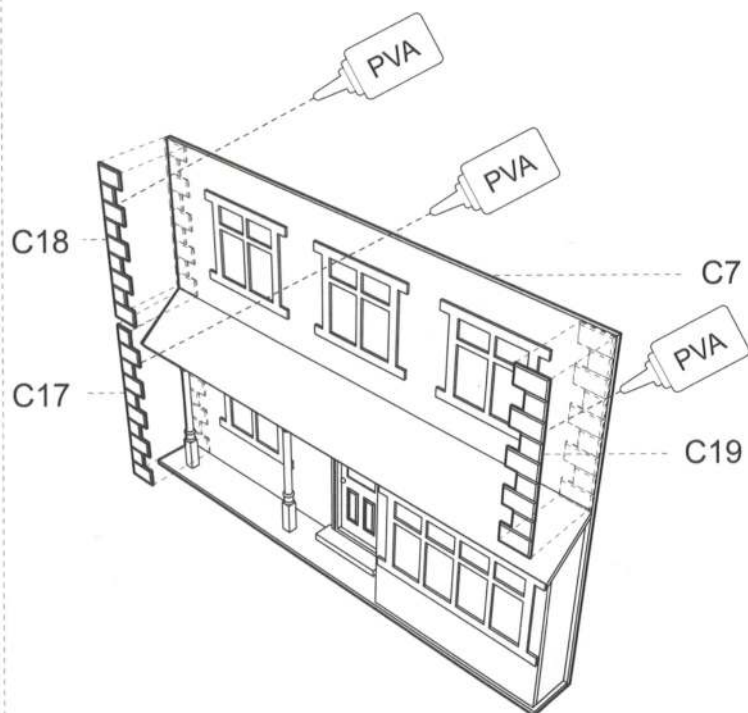
26



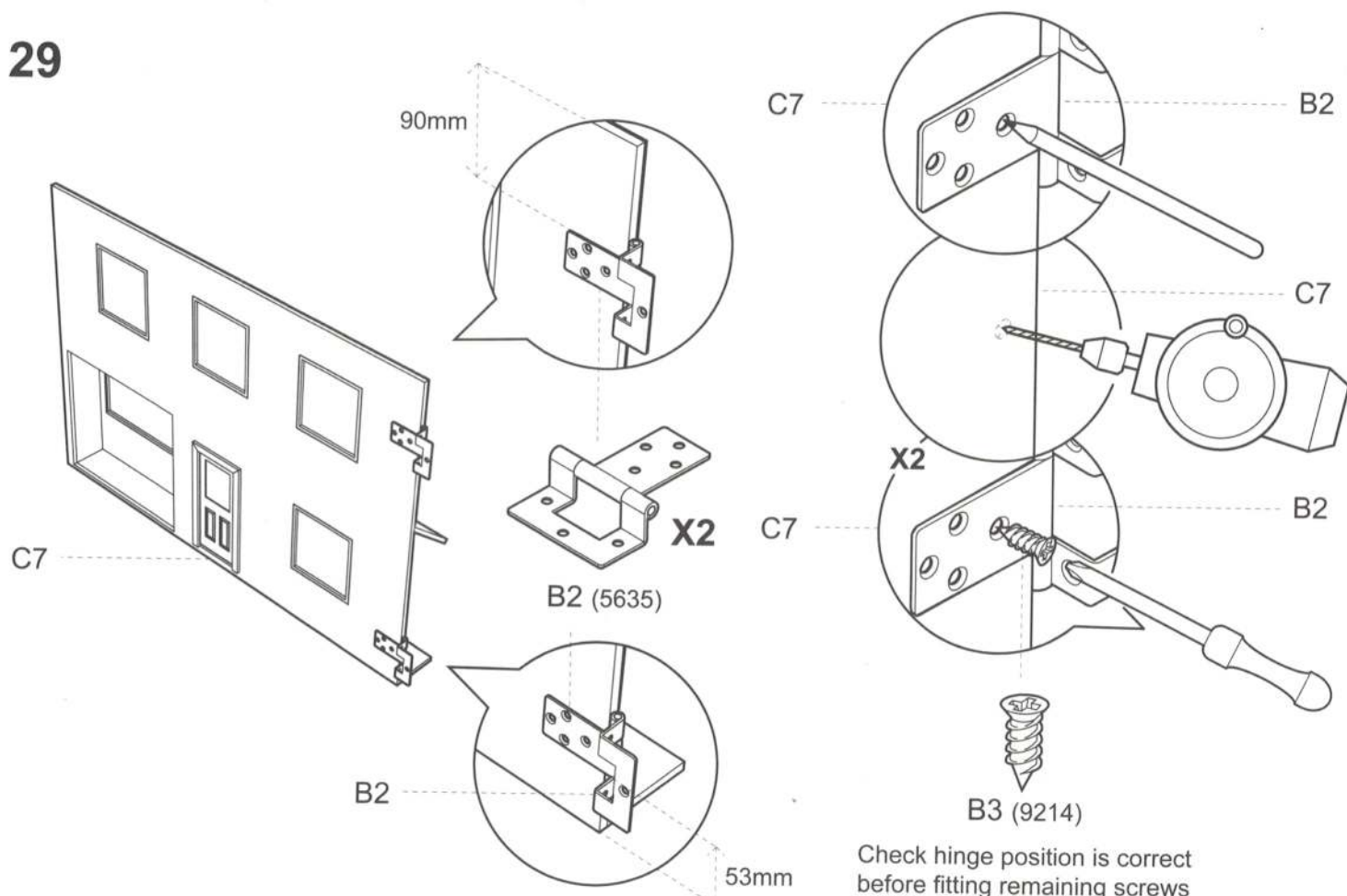
27



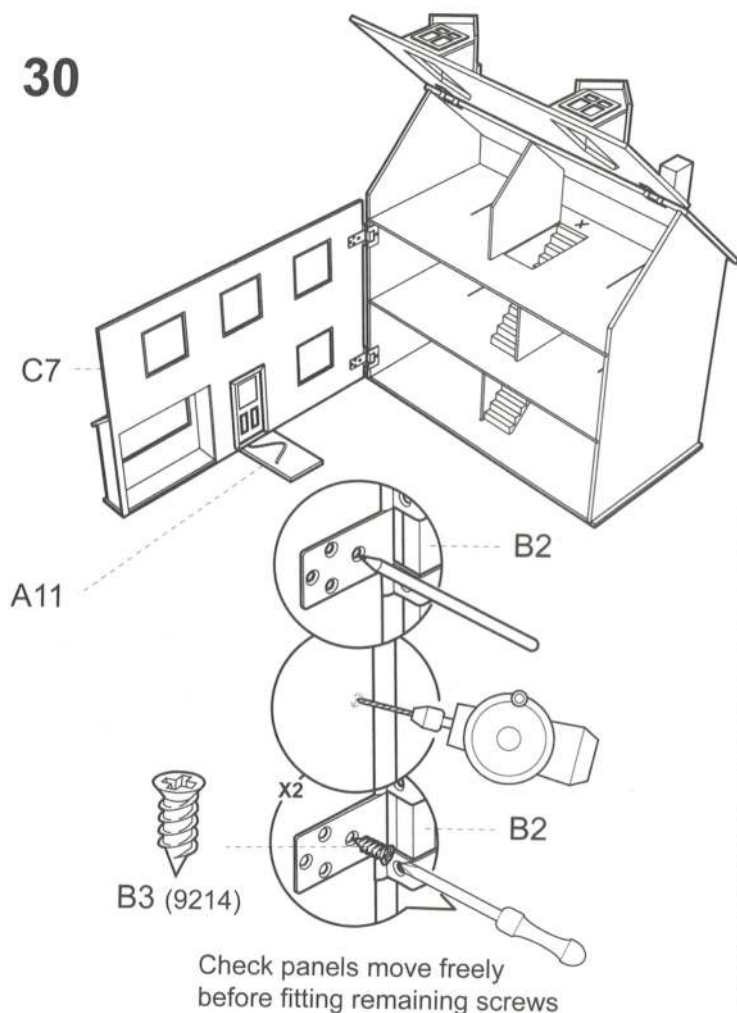
28



29



30



## CONGRATULATIONS

You have now completed your Springwood Cottage *QuickStyle*



We hope you are pleased with the results

You've bought the house,  
now get the deeds!

Now you've got your dolls' house, what about getting the paperwork in order to show it really is yours?

Visit [www.dollshouse.co.uk/deeds](http://www.dollshouse.co.uk/deeds) to fill in your details and print out your deeds there and then.

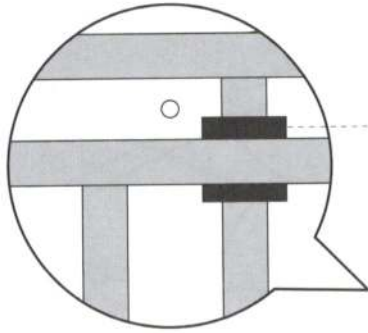
The Dolls House Emporium





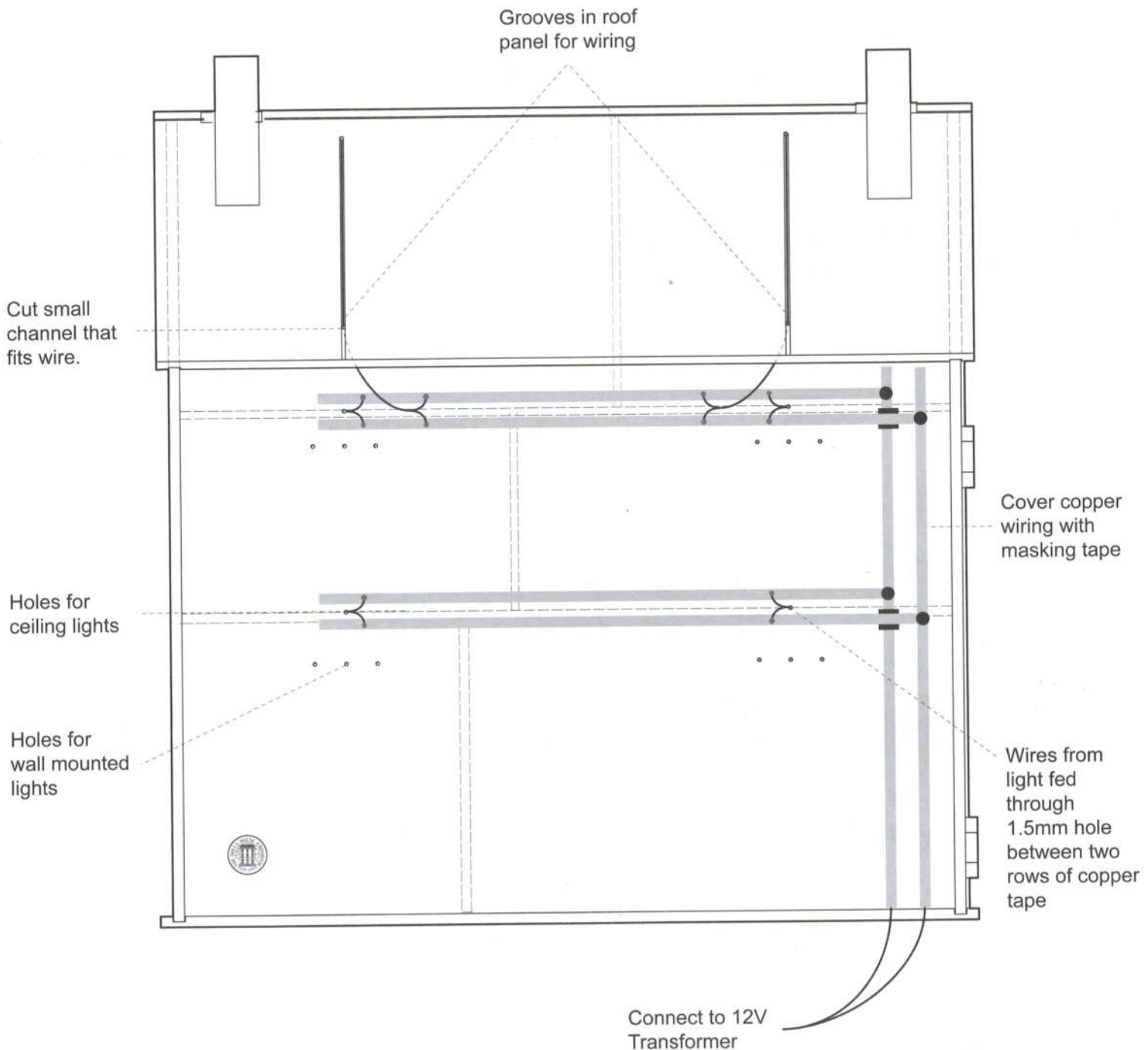
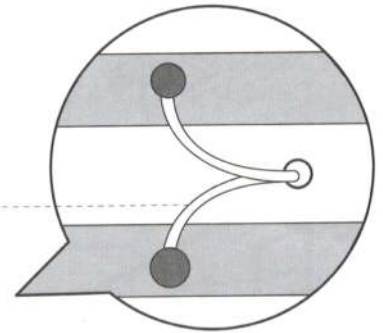
# COPPER WIRING LAYOUT

Complete wiring instructions are given with our Wiring and Lighting Sets



Masking or  
insulating tape.

Each light has two  
wires. Solder one wire  
to each copper strip



**MW12 1228N**